



TSI Monthly News

November 2009

MapInfo Professional v10.0 Feature Spotlight

Layered PDF

**MapInfo Professional
v10.0**

*is one of the best
releases yet!*

**Sign-Up for the One-
Day Getting Started
with MapInfo
Professional v10.**

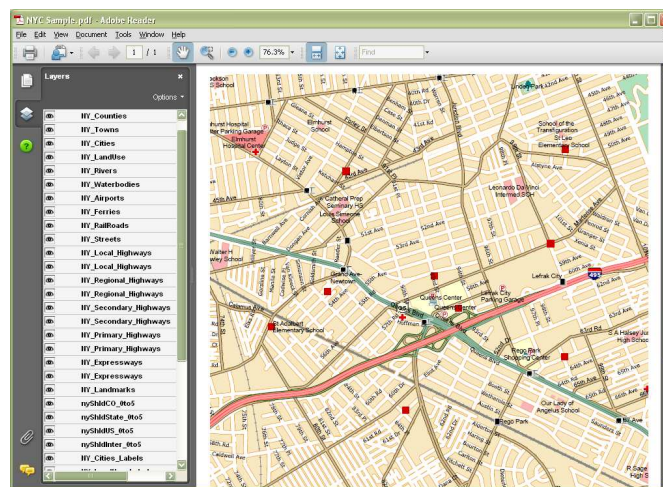
December 2, 2009

Ask us about pricing and
registration.

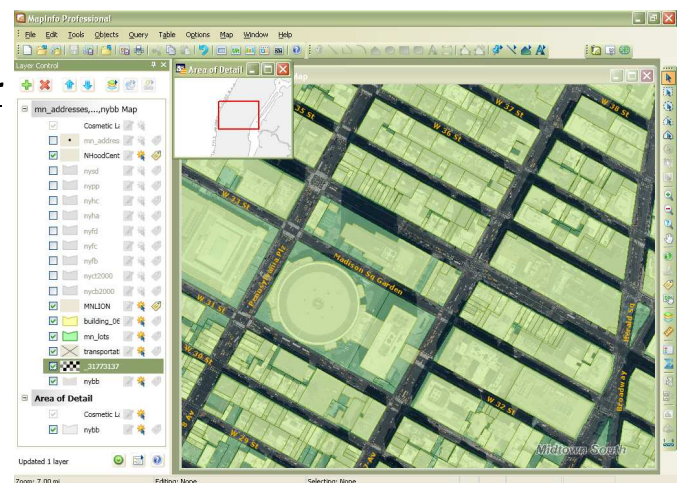
Not sure if you're using
the latest and greatest?

Call us for current
versions of software and
data.

Please give TSI a call toll-
free at (866) 874-6277
or email us at
sales@tsimapping.com
for all your mapping
software, data and
service needs!



New Layer
Control



**MapInfo Professional Upgrade Specials
10% off Until November 30th—Don't Wait.**

Call TSI toll-free for details: (866) 874-6277

Spatial+

An embeddable spatial analysis library that allows you to identify the geographic boundary or polygon in which a point is located without the need to create or interpret a map.

The Spatial+™ solution enables users to perform powerful, accurate and comprehensive spatial analysis functions including point-in-polygon and closest site determination. The Spatial+™ system can improve decision-making processes based on the relationship of your customers or prospects to specific geographic criteria.

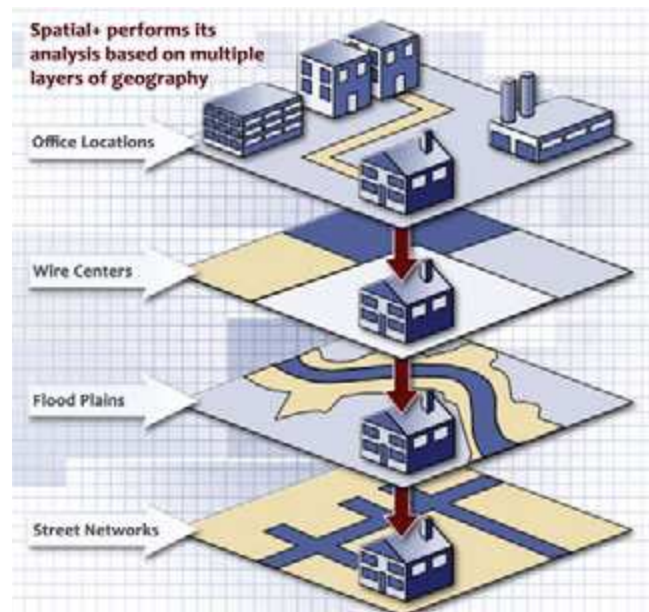
Product Features:

- Quickly identify the geographic boundary or polygon in which a point is located without the need to create and interpret a map
- Improve decision-making processes based on the relationship of your customers or prospects to specific geographic criteria
- Determine how far a customer is from a given location
- Direct customers to the closest appropriate locations

Key Attributes:

- Point-in-Polygon
- Closest Site
- Buffered Zone Analysis

Regardless of the industry, the net result is a highly accurate geographic determination mechanism that lets you make faster, more informed and precise business decisions.



TSI
5 Shaw's Cove, Suite 205
New London, CT 06320

Phone: 866-874-6277
Fax: 860-440-3889
Email: sales@tsimapping.com
www.tsimapping.com